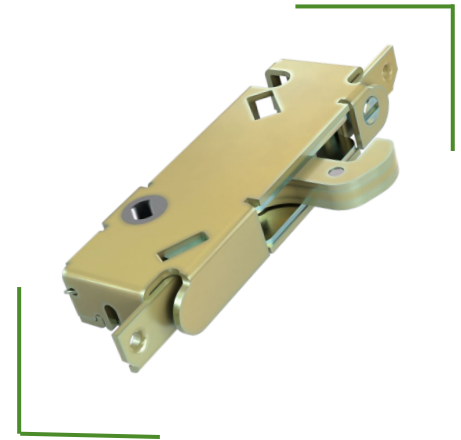


Single Point Flush Mount Locks

Mortise Locks

Our single-point sliding door lock is the workhorse in the industry, with proven reliability and strength. We incorporate a variety of trim-plate options, making our system compatible with all standard fabrication in the market today



AVAILABLE COLORS



Stainless
Steel



Steel



PRODUCT HIGHLIGHTS

- Can withstand forced entry loads in excess of 1000 lbs.
- Hook bolt has an anti-slam feature that will retract the bolt if the door is extended
- Adjustable reach hook bolt is actuated by 90-degree rotation of the hub